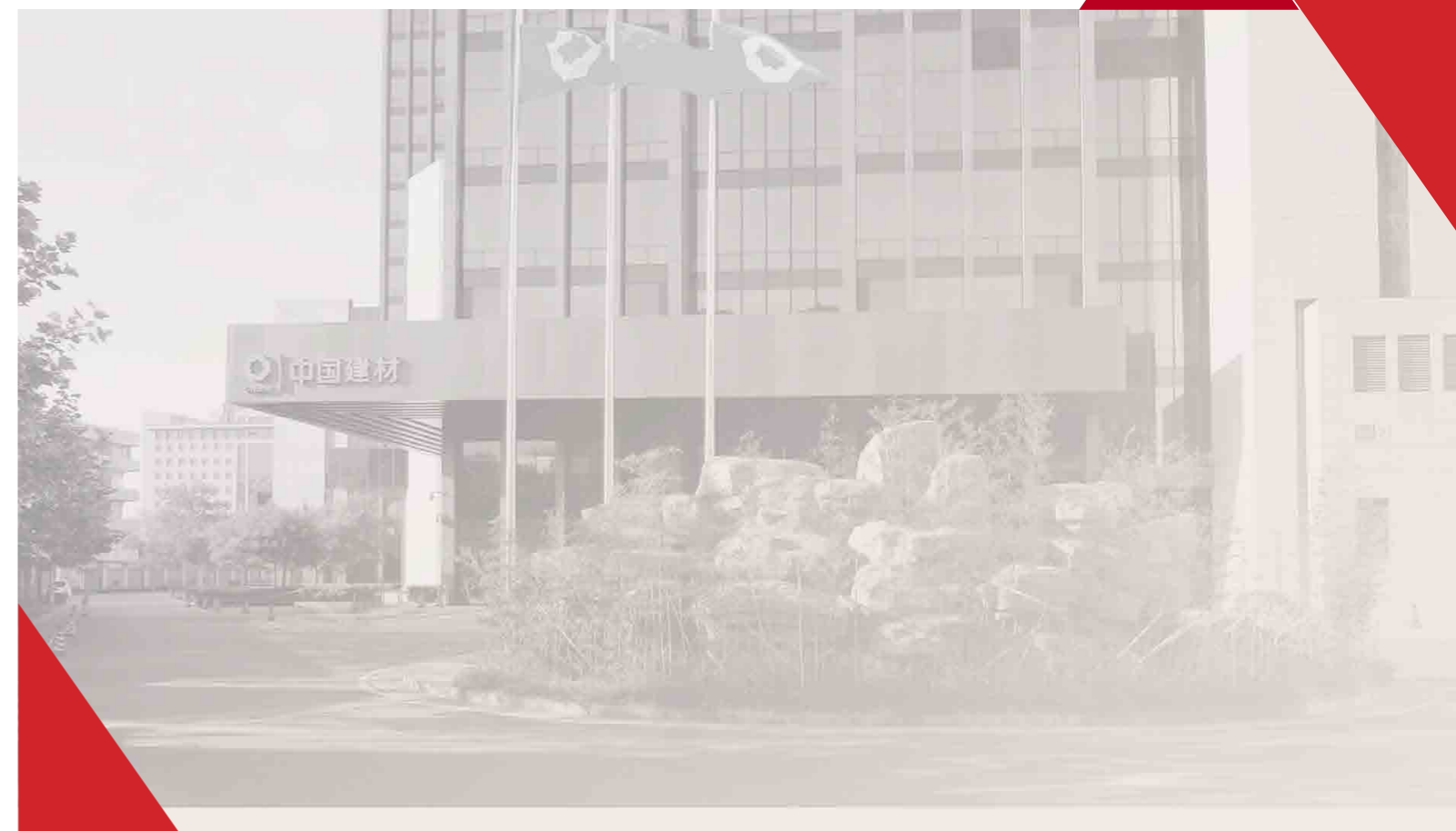


**INNOVATION, PERFORMANCE**  
**HARMONY, RESPONSIBILITY**  
**RESPECT, GRATITUDE**  
**COURTESY, DECENCY**



**ANYANG  
MACHINERY**

**Anyang Machinery take you into the world**



Phone: +86-372-2160985

Fax : +86-372-2160985

Web: [www.ayjxpm.com](http://www.ayjxpm.com)

Email: [info@ayjxpm.com](mailto:info@ayjxpm.com)

Add: NO.158 Changjiang Road, Anyang. Henan. China

**FOUNDED IN 1968**

**[www.ayjxpm.com](http://www.ayjxpm.com)**

**[info@ayjxpm.com](mailto:info@ayjxpm.com)**

**CHINA NATIONAL UNITED EQUIPMENT GROUP CORP. ANYANG MACHINERY CO., LTD**



# ABOUT US

China United Equipment Group Anyang Machinery Co., Ltd., Founded in 1968, Anyang Machinery Co., Ltd. was formerly known as the Anyang Machinery Factory of the Ministry of Light Industry. It is a state-owned sole proprietorship of the former Ministry of Light Industry for the production of pulp and paper equipment.

Over the past 50 years, our company has provided high-quality equipment and services for the domestic and international in papermaking, pulp area and daily chemical industries. We have very high reputation and significant influence in the industry. In 2005, with the asset restructuring between the leader company with China Building Materials Group, it was renamed as Anyang Machinery Factory of China Building Materials Light Industry Machinery Group. In 2006, based on the basic idea of building "the four major business sectors "industry, technology, complete equipment, and logistics trade" by the group company, internal technology research and development and equipment manufacturing resources were integrated, with an investment of 350 million yuan. A new type of mechanical equipment manufacturing base with high level and considerable scale for pulp and paper equipment, building materials equipment, and pressure vessels was built. Afterwards, In 2010, the company successfully completed the relocation, transformation, and restructuring, and relocated to Anyang High tech Development Zone, officially joining China National United Equipment Group Corporation and renamed as China National United Equipment Group corporation Anyang Machinery Co., Ltd.

Now our company is located in the eastern direction of Changjiang Avenue in Anyang City, covering an area of nearly 200 acres. The factory area about 60000 square meters and more than 800 production equipment, of which 30% are large equipment, with ability of the thickness of 100mm production for rolling plates and the lifting capacity more than 200 tons. Having design and manufacturing qualifications for Class I, II, and III pressure vessels, vacuum, atmospheric pressure vessels, and other non-standard equipment. In the field of light industry machinery, we strive to break through the welding and production of non-ferrous metals such as composite plates, dual phase steel, and titanium materials. The company currently has over 300 employees, including over 100 engineering and technical personnel and over 20 senior engineers. The technical team is excellent, the design methods are advanced, and we have our own design and research center as technical support. This has laid a solid foundation for the company's productivity takeoff, with an annual output of 20000 tons and an annual output value of nearly 500 million yuan.

Over the past 50 years, under the support of strong technical strength and production capacity, AM has formed seven large product

segments, including pulp and paper equipment, daily chemical equipment, water treatment equipment, pressure vessel equipment, wind power equipment, Building materials equipment, etc. Since 2012, our company has been committed to the specialized production and manufacturing of large-scale steel structures in the power energy industry. Our main products cover the manufacturing of wind power towers, offshore wind power towers and infrastructure, and petrochemical equipment. Rich project experience and manufacturing capabilities, fully meeting the requirements of various pressure vessel manufacturing and large wind power towers. and perfect quality system AM owns can ensure to provide the users with excellent products. AM has been enjoying good reputation in the market for decades.

China National United Equipment Group corp. Anyang Machinery Co., Ltd. has won multiple honors in its decades of development. Including the title of Advanced Collective from the State owned Assets Supervision and Administration Commission, the third prize for scientific and technological progress from the Ministry of Aeronautics and Astronautics, the silver medal in the National Central Enterprise Welder Competition, the provincial-level technology center, the winning unit in the safety production competition, and multiple May Day Labor Awards.

Since our company establishment, It has been always adhering to the company philosophy of "Harmony, Innovation, Efficiency, Pragmatism and Reputation", bearing in mind the precept of "Innovation Never Ends", abiding by the business philosophy of "Good Faith and Mutual Benefit, Technology-based" and following the core value of "Self-realization and Dedication". It attaches great importance to continuously strengthening the culture construction, promotes the healthy, coordinated and harmonious development, so it has formed the value and spirit of the company that meets the requirements of the development of the times with its own characteristics and make it a spiritual driving force for employees to love their work and strive for contributions.

Over the years, our company based on domestic market, facing the world, AM adheres to the market concepts of "User First. Good Faith and Mutual Benefit and Common Development" focuses on technological innovation, service innovation, and constantly improves its comprehensive strength, firmly establishes "Quality Awareness", creates its own brand, manufactures high-quality products, continuously makes great breakthroughs and approaches to new heights.



# QUALIFICATION & HONOR

证书号第 12796530 号

### 实用新型专利证书

实用新型名称: 一种建筑外墙保温材料孔机

发明人: 张素芳; 张政伟; 王江红; 王中奎; 刘志杰; 张双军

专利号: ZL 2020 2 1468256.2

专利公告日: 2020年07月22日

专利权人: 中国联合装备集团安阳机械有限公司

地址: 455000 河南省安阳市开发区长江大道东段北侧

授权公告日: 2021年03月26日 授权公告号: CN 212795246 U

局长 申长雨

证书号第 12792741 号

### 实用新型专利证书

实用新型名称: 一种利用微生物发酵处理餐厨垃圾的生化机

发明人: 张双军; 张政伟; 王中奎; 张素芳; 叶禹; 莫飞

专利号: ZL 2020 2 1460883.5

专利公告日: 2020年07月22日

专利权人: 中国联合装备集团安阳机械有限公司

地址: 455000 河南省安阳市开发区长江大道东段北侧

授权公告日: 2021年03月26日 授权公告号: CN 212800326 U

局长 申长雨

证书号第 12789879 号

### 实用新型专利证书

实用新型名称: 一种全方位过滤网形框对接焊接工装

发明人: 王中奎; 许运涛; 张政伟; 张素芳; 谢强; 张双军

专利号: ZL 2020 2 1523815.5

专利公告日: 2020年07月28日

专利权人: 中国联合装备集团安阳机械有限公司

地址: 455000 河南省安阳市开发区长江大道东段北侧

授权公告日: 2021年03月26日 授权公告号: CN 212793740 U

局长 申长雨

证书号第 13767058 号

### 实用新型专利证书

实用新型名称: 一种大型轴类零件的花键加工装置

发明人: 王中奎; 张政伟; 徐记伟; 张素芳; 叶禹; 熊德平; 宋佳

专利号: ZL 2020 2 2485966.8

专利公告日: 2020年10月30日

专利权人: 中国联合装备集团安阳机械有限公司

地址: 455000 河南省安阳市开发区长江大道东段北侧

授权公告日: 2021年07月27日 授权公告号: CN 213776117 U

局长 申长雨

证书号第 13743018 号

### 实用新型专利证书

实用新型名称: 一种大直径轴类零件支撑装置

发明人: 刘志杰; 张政伟; 王中奎; 张素芳; 叶禹; 王江红; 谢强

专利号: ZL 2020 2 2485922.6

专利公告日: 2020年10月30日

专利权人: 中国联合装备集团安阳机械有限公司

地址: 455000 河南省安阳市开发区长江大道东段北侧

授权公告日: 2021年07月27日 授权公告号: CN 213776117 U

局长 申长雨

证书号第 17426884 号

### 实用新型专利证书

实用新型名称: 一种用于气炉的多功能中心管

发明人: 王中奎; 张政伟; 张素芳; 叶禹; 熊德平

专利号: ZL 2022 2 1044392.8

专利公告日: 2022年04月29日

专利权人: 中国联合装备集团安阳机械有限公司

地址: 455000 河南省安阳市开发区长江大道东段北侧

授权公告日: 2022年10月28日 授权公告号: CN 217885016 U

局长 申长雨

### 高新技术企业证书

企业名称: 中国联合装备集团安阳机械有限公司 证书编号: GR202141003229

发证时间: 2021年12月15日 有效期: 三年

批准机关: 河南省科技厅

### 河南省轻工行业五十强企业

河南省轻工行业协会 2022年6月 有效期: 1年

### 河南省造纸学会第三届理事会 副理事长

河南省造纸学会 二〇二三年四月

证书号第 17660378 号

### 实用新型专利证书

实用新型名称: 一种用于生活垃圾处理的气化炉炉体

发明人: 张素芳; 张政伟; 王中奎; 刘志杰; 张双军

专利号: ZL 2022 2 1044281.7

专利公告日: 2022年04月29日

专利权人: 中国联合装备集团安阳机械有限公司

地址: 455000 河南省安阳市开发区长江大道东段北侧

授权公告日: 2022年10月28日 授权公告号: CN 217885024 U

局长 申长雨

### CERTIFICATE OF CONFORMITY OF QUALITY MANAGEMENT SYSTEM CERTIFICATION

Registration No.: 30523Q30889R1EM

This Is To Certify That The Quality Management System Of China United Equipment Group Anyang Machinery Co., Ltd

Registration Address: North of East Section of Changjiang Avenue, Anyang Development Zone

Production/Business Address: North of East Section of Changjiang Avenue, Development Zone, Anyang City, Henan Province

Quality Management System Complies With: GB/T19001-2016/ISO9001:2015 Standard

Date of issue: 2023-08-17 Expiry date: 2026-08-16

局长 申长雨

### 中华人民共和国特种设备生产许可证

Production License of Special Equipment People's Republic of China

编号: TS2241315-2024

单位名称: 中国联合装备集团安阳机械有限公司

住所: 安阳市开发区长江大道东段北侧

制造地址: 安阳市开发区长江大道东段北侧

许可项目	许可子项目	许可参数	备注
压力容器制造(安装、修理、改造)	固定式压力容器	-	/

发证机关: 河南省市场监督管理局 发证日期: 2020年1月19日

有效期: 2020年2月27日至2024年2月26日

### CERTIFICATE OF CONFORMITY OF ENVIRONMENTAL MANAGEMENT SYSTEM CERTIFICATION

Registration No.: 30523E30909R0M

This Is To Certify That The Environmental Management System Of China United Equipment Group Anyang Machinery Co., Ltd

Registration Address: North of East Section of Changjiang Avenue, Anyang Development Zone

Production/Business Address: North of East Section of Changjiang Avenue, Development Zone, Anyang City, Henan Province

Environmental Management System Complies With: GB/T24001-2016/ISO14001:2015 Standard

Date of issue: 2023-08-17 Expiry date: 2026-08-16

局长 申长雨

### 知识产权管理体系认证证书

证书号: 1651P230540R0M

中国联合装备集团安阳机械有限公司

注册地: 安阳市开发区长江大道东段北侧

经营地址: 河南省安阳市高新技术开发区长江大道东段北侧

知识产权管理体系符合标准: GB/T29490-2013

通过认证的范围如下: 造纸设备、垃圾处理设备、风电塔筒、资质范围内压力容器的设计、生产、销售的知识产权管理

发证日期: 2023年07月27日 有效期至: 2026年07月26日

局长 申长雨

### OCCUPATIONAL HEALTH AND SAFETY MANAGEMENT SYSTEM CERTIFICATE

Registration No.: 30523S30891R1EM

This Is To Certify That The Occupational Health And Safety Management System Of China United Equipment Group Anyang Machinery Co., Ltd

Registration Address: North of East Section of Changjiang Avenue, Anyang Development Zone

Production/Business Address: North of East Section of Changjiang Avenue, Development Zone, Anyang City, Henan Province

Occupational Health And Safety Management System Complies With: GB/T45001-2020/ISO 45001:2018 Standard

Date of issue: 2023-08-17 Expiry date: 2026-08-16

局长 申长雨

### 证书

中国联合装备集团安阳机械有限公司: 你单位“一种可靠实现支撑、排灰和自动除渣功能的水冷式气化炉排渣机”项目获得凯盛科技集团有限公司2020年度技术革新奖技术开发类三等奖。

发明人: 王中奎、张政伟、张素芳、叶禹、张双军、王江红、刘志杰、段科阳

特发此证,以资鼓励。

凯盛科技集团有限公司 二零二一年一月

### 证书

中国联合装备集团安阳机械有限公司: 你单位“中试干式厌氧发酵实验系统”项目获得凯盛科技集团有限公司2020年度技术革新奖技术开发类二等奖。

发明人: 张双军、许运涛、张政伟、王中奎、张素芳、刘志杰、段科阳、王院利、王江红、周海泉

特发此证,以资鼓励。

凯盛科技集团有限公司 二零二一年一月

### 荣誉证书

中国联合装备集团安阳机械有限公司市场部: 被评为中国联合装备集团有限公司2022年度“先进集体”,特发此证,以资鼓励。

中国联合装备集团有限公司 二零二二年一月



# EXCELLENT PROCESSING EQUIPMENT



Laser Cutting Machine (30kW)



Beveling Machine



Rolling Machine  
(Max.rolling thickness 100mm)



Dual Linkage Large Bending Machine  
(Max. processing length of 12m)



Hydraulic Press Work Area





## Heavy Cross Workshop (Max. lifting capacity 200t)



## Double Seat Welding Positioner



## Horizontal Lathe Work Area Max Diameter of 6m and length of 24m





# Vertical Lathe Work Area (Machining Diameter 10m, height 4m)







## PAPERMAKING EQUIPMENT

With high-quality products and excellent services, AM has won high praises from domestic and international customers. The products have been exported to Indonesia, Vietnam, Pakistan, Malaysia and other countries. The products are stable and reliable, and are widely used in the papermaking and chemical industries.

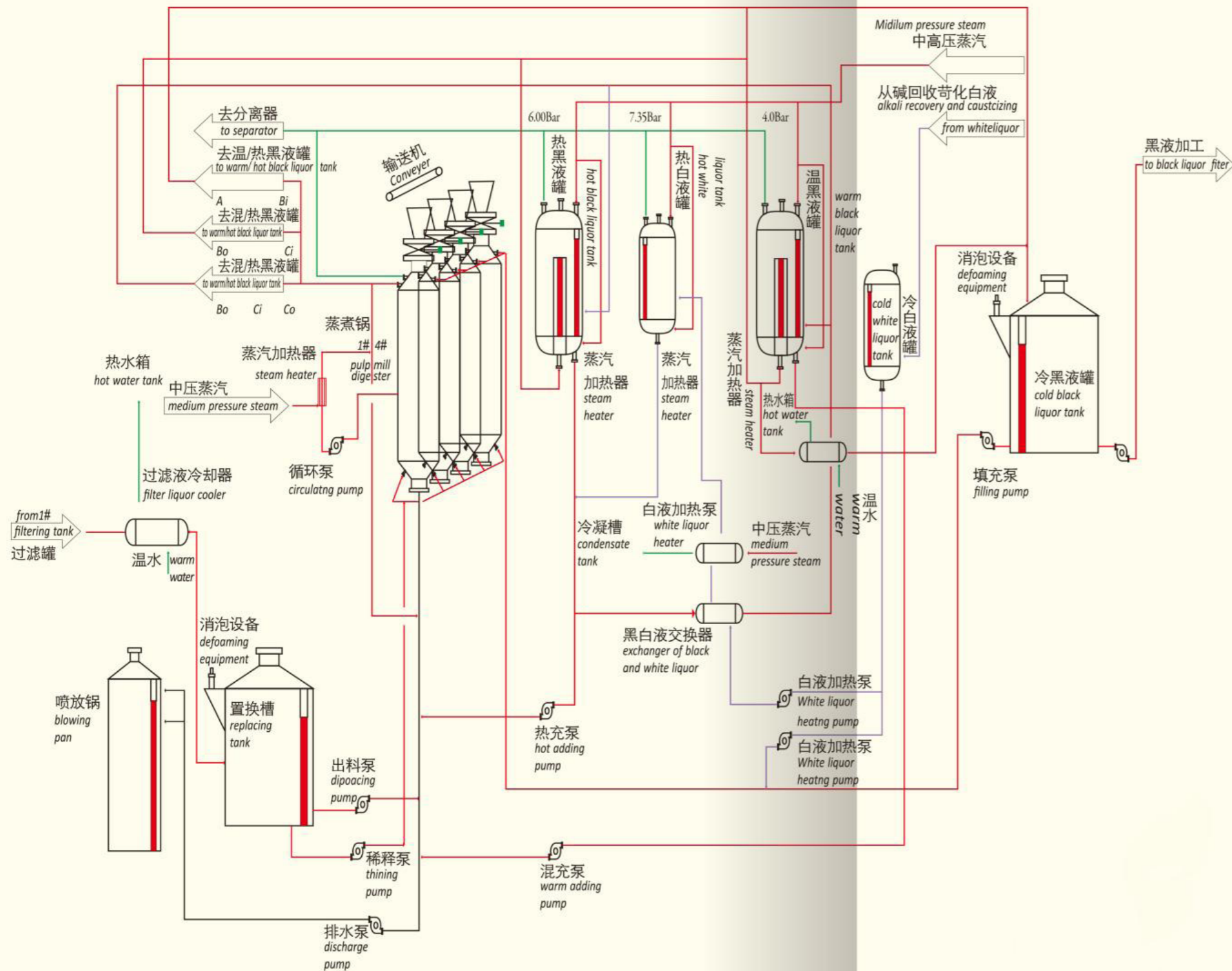


# CHEMICAL PULP PRODUCTION LINE

## 化学浆生产线

## CHEMICAL PULP PRODUCTION

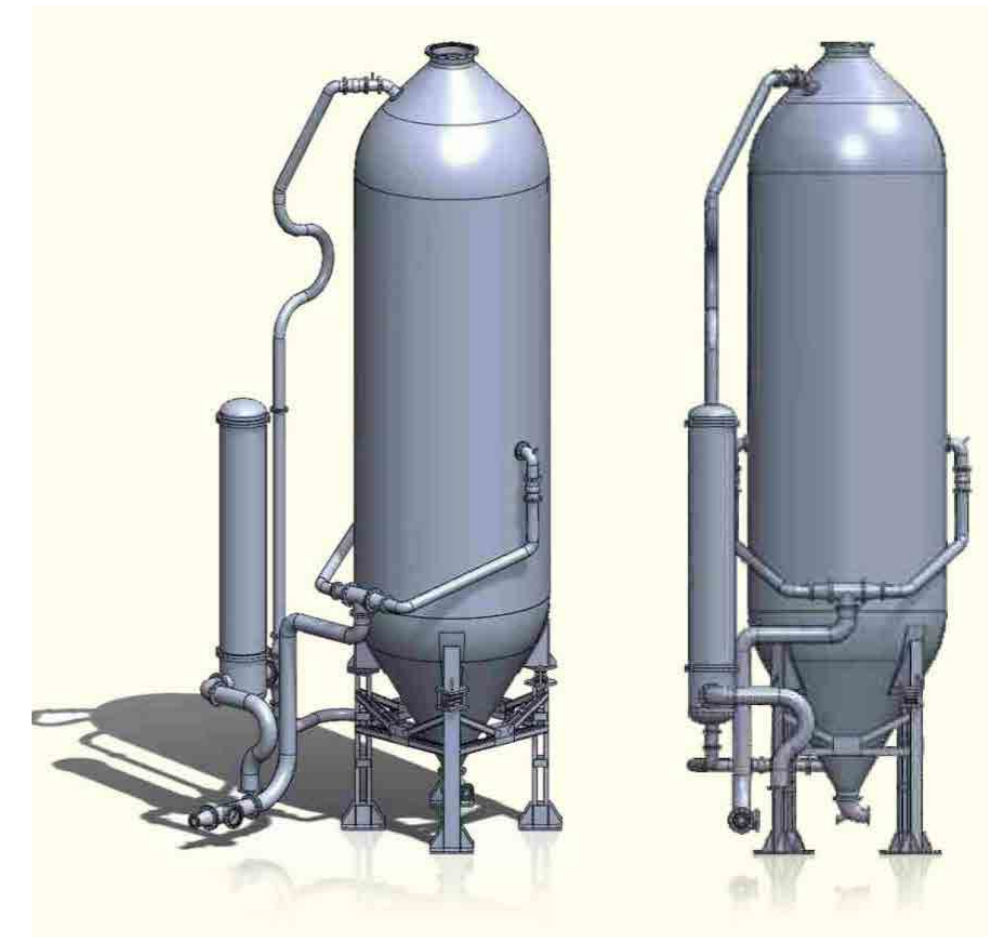
### LINE



Anyang Machinery is a fixed production company for the cooking equipments designated by the State-owned Assets Supervision and Administration Commission(SASAC). Since the 1980s, it has been dedicated to produce 400,000- 500,000 tons of batch cooking equipment, continuous

cooking equipment and other traditional cooking equipments for paper making, and has provided the entire production lines for more than 60 paper companies.

The chemical pulp production lines AM has provided has occupied a market share of more than 90% in China. The product quality is higher, the operation is stable, and the after-sales service is thorough and satisfactory, winning customers' high favors in the market.





# CHEMICAL PULP PRODUCTION LINE | DIGESTER

Digester is one of the leading products of our company. We can produce various products with different specifications, including 503, 75m<sup>3</sup>, 110m<sup>3</sup>, 135m<sup>3</sup>, 175m<sup>3</sup>, 225m<sup>3</sup>, 250m<sup>3</sup>, 330m<sup>3</sup> and 400m<sup>3</sup> of digester series. The maximum diameter is 5.8m and the maximum capacity is 400m<sup>3</sup>. Because of process difference between the alkaline pulp and the acid pulp, the digesters can be made of carbon steel, stainless steel, composite steel, or duplex stainless steel. The digester series are mainly used for chemical pulp and dissolved fiber steaming operations.



## OPERATIONAL PRINCIPAL

Digester is mainly used for cooking and pulping with wood, bamboo and the like as raw materials. The water content of the material is less than 15%, the ash content is 2%-3%, the cellulose content is 50-55% the lignin content is 22%-25%, and the content of silicon is less than 3%. First, the material is cut into thin chip(25mmx30mm), and then it enters the digester filled with coolant and steam through the conveyor belt. The cooking time is determined by the pulping process requirements (Yield and hardness of pulp), and it will last for 5.5h-6h. The cooking temperature is 160°C-175°C. The heating process mainly involves the effective indirect heating zone of the tube heater. The liquor flowing out from the center goes through the tube to be heated and transported from top to bottom, and then it will be heated circularly for 8-12 times per hour. At the same time, the steam enters through the vents at the bottom for auxiliary heating. During the cooking process, the gas is exhausted through the upper vents to reduce the false pressure caused by the air inside the main body of the digester to ensure the uniformity of the cooking pulp and improve the quality of the pulp. After the cooking is completed, the pulp is separated from the body by the discharge valve under pressure and enters the discharge tank for temporary storage.





# CHEMICAL PULP PRODUCTION LINE I

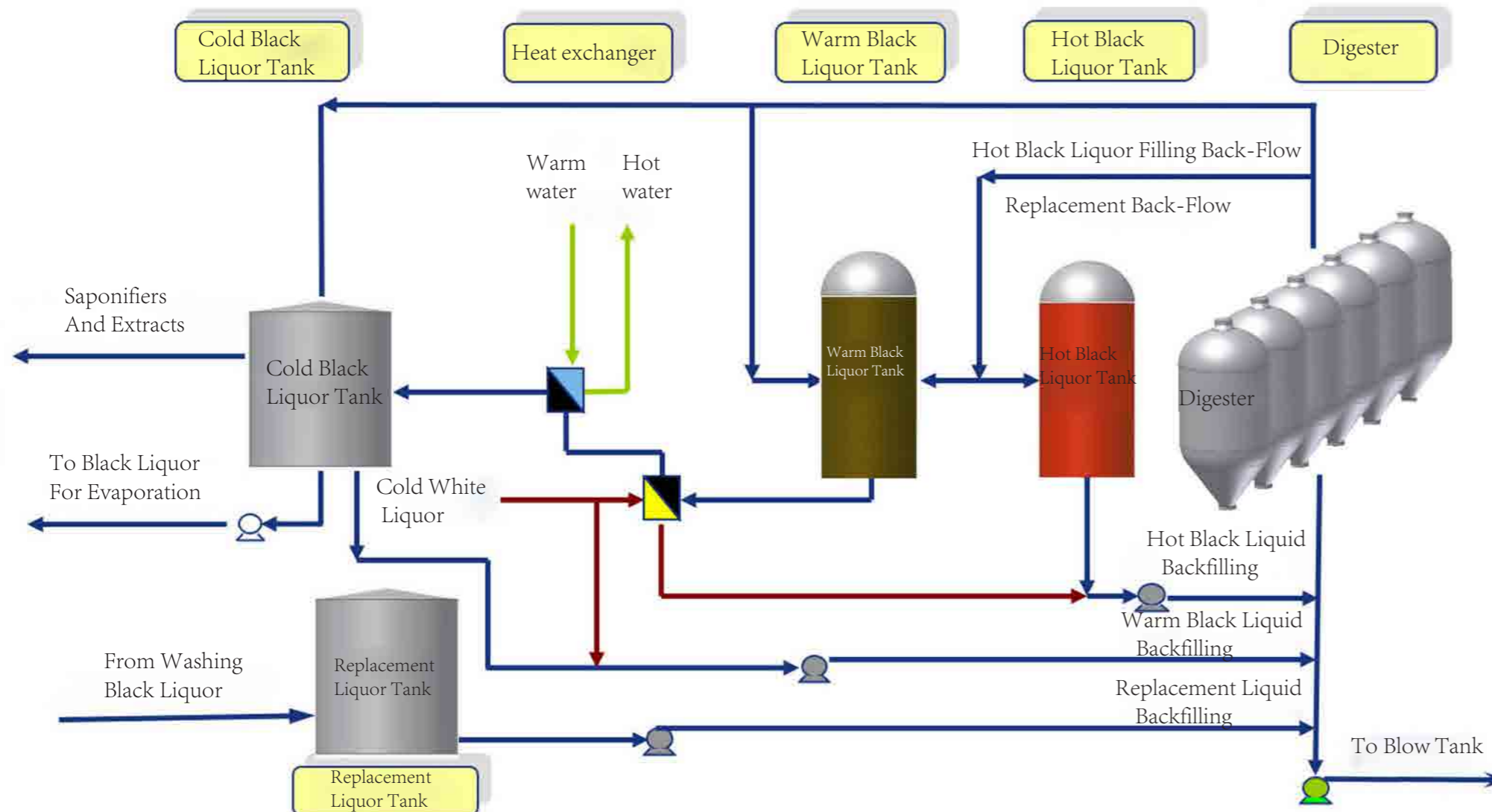
## SUPER BATCH COOKING

The process can be also used to produce the dissolving pulp depending on different raw materials.

Based on traditional cooking characteristics, our company developed super batch cooking process with an annual output of 300,000 tons in 2007. It can save about 60% of the cooking steam consumption, which is equivalent to reducing the coal consumption by 10,000 tons per year (Calculated in standard coal). At the same time, we are able to decrease the emissions of sulfur dioxide and soot from the alkali recovery boiler by approximately 15%, reach zero discharge of wastewater and reduce the discharge of bleaching wastewater.

### ADVANTAGE

- A: As producing one ton of pulp, traditional equipment needs about 2 tons-2.5 tons of steam consumption. Compared with it, the batch cooking process equipment can reduce the consumption greatly down to 0.6 ton-0.8 ton.
- B: Pulp lignin Removing, low Kappa value and high strength of paper.
- C: High-quality of pulp bleaching, due to low kappa value, high strength, etc., oxygen delignification, good production environment, at the same time, chemicals drop in usage gradually so as to lower the pollution and papermaking costs.
- D: The whole production process adopts automatic control. The system reliability is improved greatly, and the pulp quality is stable and reliable.



### MAIN COROLLARY EQUIPMENTS

Digester: 50m', 75m', 110m', 135m', 175m', 225m', 250m', 330m' and 400m'. According to different processes, main manufacturing materials are carbon steel, stainless steel, composite board and duplex stainless steel.

Blow Tank: 80m', 150m', 225m', 330m', 500m', 1050m' and 1800m'. According to different processes, main manufacturing materials are carbon steel, stainless steel, composite board and duplex stainless steel.

Vacuum Washer: 30m<sup>2</sup>, 45m<sup>2</sup>, 60m<sup>2</sup>, 80m<sup>2</sup>, 100m<sup>2</sup> and 120m<sup>2</sup>. According to different technologies, main manufacturing materials are carbon steel and stainless steel.

Replacement Tank: hot black liquor tank, hot white liquor tank, warm black liquor tank, cold black liquor tank, various heat exchangers. According to different requirements, main manufacturing materials are carbon steel, stainless steel and duplex stainless steel.



## REPLACEMENT DIGESTER SPECIFICATIONS

Model	ZJG3	ZJG4	ZJG5	ZJG6	ZJG7	ZJG8	ZJG9
Effective Volume (m3)	110	135	175	225	250	330	400
Internal Diameter(mm)	3600	4000	4500	4500	4500	5600	5800
Design Pressure (Mpa)	0.9/1.2						
Design Temperature ( °C )	180/240						

## COMPELETE TANK AND HEAT EXCHANGER

Complete Tank	Cold Black Liquor Tank, Warm Black Liquor Tank, Hot Black Liquor Tank, Cold White Liquor Tank, Hot White Liquor Tank
Heat Exchanger	Warm Black Liquor Cooler, Black/White Liquor Exchanger, White Liquor Heater, Steam Distributor, Cyclone Separator



## REPLACEMENT DIGESTER SPECIFICATIONS

Model	ZJG1	ZJG2	ZJG3	ZJG4	ZJG5	ZJG6
Effective Volume (m3)	50	75	110	135	175	225
Internal Diameter(mm)	Φ 3000	Φ 3250	Φ 3600	Φ 3600	Φ 4500	Φ 4500
Max. Working Pressure (Mpa)	0.8					
Max. Working Temperature ( °C )	175					

### COROLLARY EQUIPMENT

Alkaline Solution Heater	Model	ZJG1-2	ZJG2-2	ZJG3-2	ZJG4-2	ZJG5-2	ZJG6-2
	Spec M2	40	65	90	110	140	190
Alkaline Solution Circulating Pump	Model	ZBY21	ZBY22	ZBY24	ZBY24	ZBY24	ZBY24
	Spec	Φ 200	Φ 250	Φ 300	Φ 300	Φ 300	Φ 300
Discharge Valve	Model	Q647Y-16P	Q647Y-16P	Q647Y-16P	Q647Y-16P	Q647Y-16P	Q647Y-16P
	Spec	Φ 200	Φ 200	Φ 200	Φ 200	Φ 300	Φ 300
Automatic Cover	Φ 770						
Blow tank	Model	ZJP2	ZJP3	ZJP4	ZJP5	ZJP6	ZJP7
	Spec M2	150	225	330	400	500	800
Internal Diameter (mm)	Φ 5000		Φ 5600	Φ 6500	Φ 7000	Φ 7000	Φ 8000
Max. Working Pressure (Mpa)	0.25						
Max. Working Pressure (Mpa)	175						



## TRADITIONAL COOKING WORKSHOP AND COROLLARY EQUIPMENTS: (BLEACHING SYSTEM, CHEMICAL LIQUOR STORAGE SYSTEM)

Equipment Technology and Operating Characteristics



## REPLACEMENT DIGESTER WORKSHOP AND COROLLARY EQUIPMENTS:

Replacement cooking process is the most advanced batch cooking process in the world currently, and has the following advantages compared with traditional cooking process:

The steam consumption is decreased down to 0.6T-0.8T per ton of pulp (Traditional digester consumption is 2.0T-2.5T per ton of pulp) Low kappa, high strength and high yield of pulp can be obtained through deep delignification.

The pulp obtained better bleaching properties. Due to low kappa value and high strength, it is convenient for oxygen delignification, which reduces the consumption of bleaching chemicals and lowers the pollution.

The production process is controlled by computer and human intervention is eliminated to the greatest extent, which ensures the stability and reliability of the system.

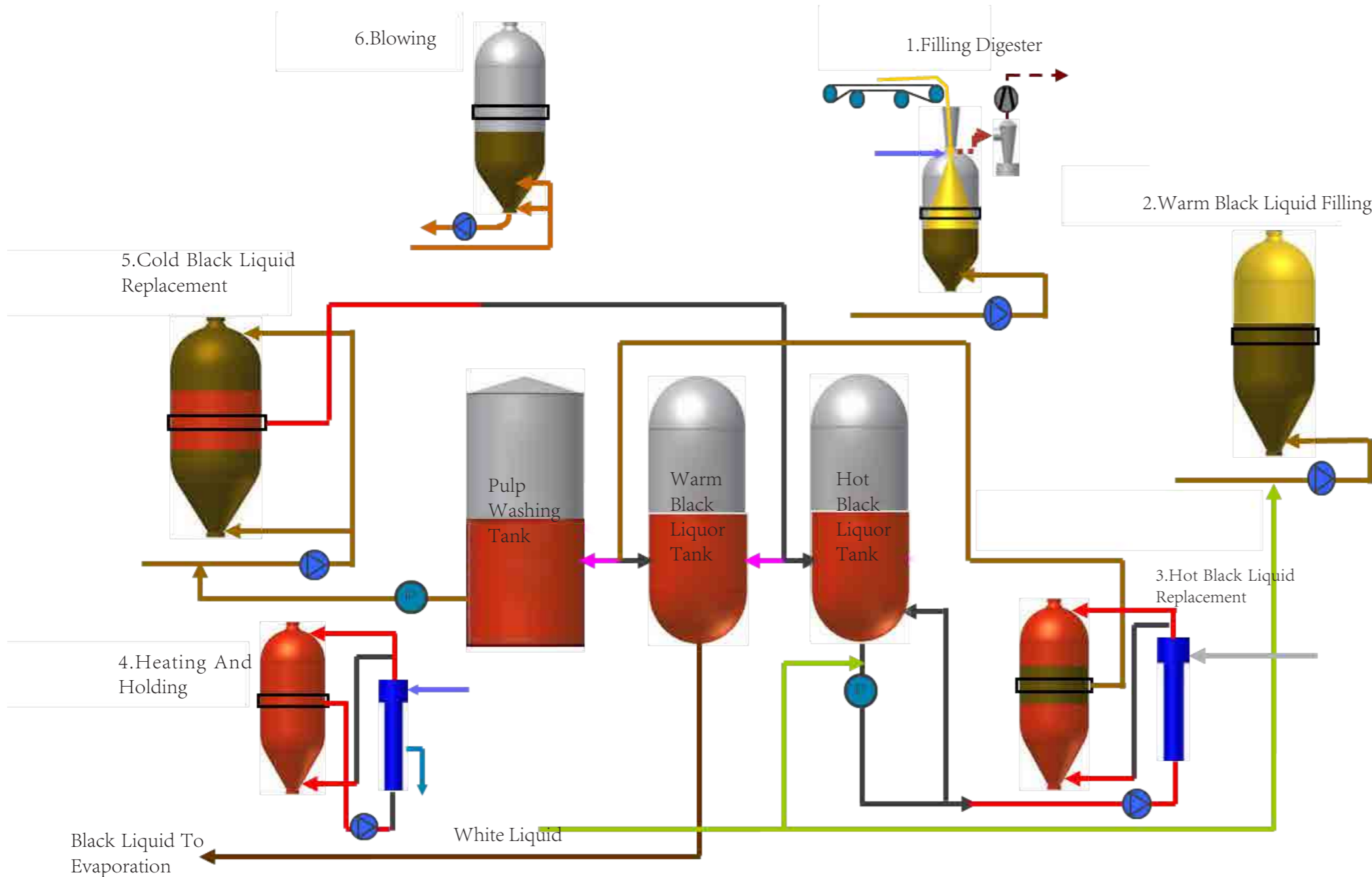
### OPERATIONAL PRINCIPLE

Replacement cooking process adopts the principles of the replacement cycle of black liquor in the batch digester and the diffusion cleaning. The consumed cooking liquor and heat are replaced, and completed by cold blowing. The process can utilize black liquor repeatedly, and the lignin, as well as dissolved hemi-cellulose, can be extracted from the cooking system completely during the delignification stage. In the supplementary delignification stage, the cooking liquor can be re-added. By this way, heat and chemicals can be recycled, and the cooking state is balanced continuously throughout the cooking process, which improves pulp quality and production efficiency.





# REPLACEMENT COOKING SYSTEM - PROCESSING



1. Filling digester: The raw materials are loaded into the digester and the air inside the digester is discharged.
2. Fill the digester with warm black liquor from the black liquor tank and add an appropriate amount of white liquid
3. Fill the digester with hot black and white liquid from the hot black liquid tank to replace the warm black liquor inside the digester.
4. Heating and Holding: Use steam to directly heat the digester to the required maximum cooking temperature and holding the temperature.
5. Cold black liquor replacement: Fill the digester with dilute black liquor, replace the hot black liquor and store it in the tank area, and the pulp is washed and cooled.
6. Low pressure blowing: Use a pump to deliver the pulp that has been cooled to a temperature lower than the atmospheric flash evaporation temperature to the blowing tank.



# REPLACEMENT COOKING SYSTEM - EQUIPMENT PRODUCTION





# REPLACEMENT COOKING SYSTEM - TRANSPORTATION, INSTALLATION SITE, USING



2008年起，225m<sup>3</sup>、250m<sup>3</sup>置换蒸煮锅相继在重庆理文、永丰浆纸等公司投产运行



2010年起，国内最大400m<sup>3</sup>双相不锈钢置换蒸煮锅相继在福建青山纸业、重庆理文纸业、安庆华泰纸业等企业投产运行。

工程记录  
 施工内容：广西崇左市理文造纸厂蒸煮锅安装  
 拍摄时间：2023.01.25 17:20  
 天气：多云 16°C  
 地点：崇左市·昌隆

今日水印  
 相机  
 真实时间



# CHEMICAL PULP PRODUCTION LINE | CONTINUOUS COOKING SYSTEM

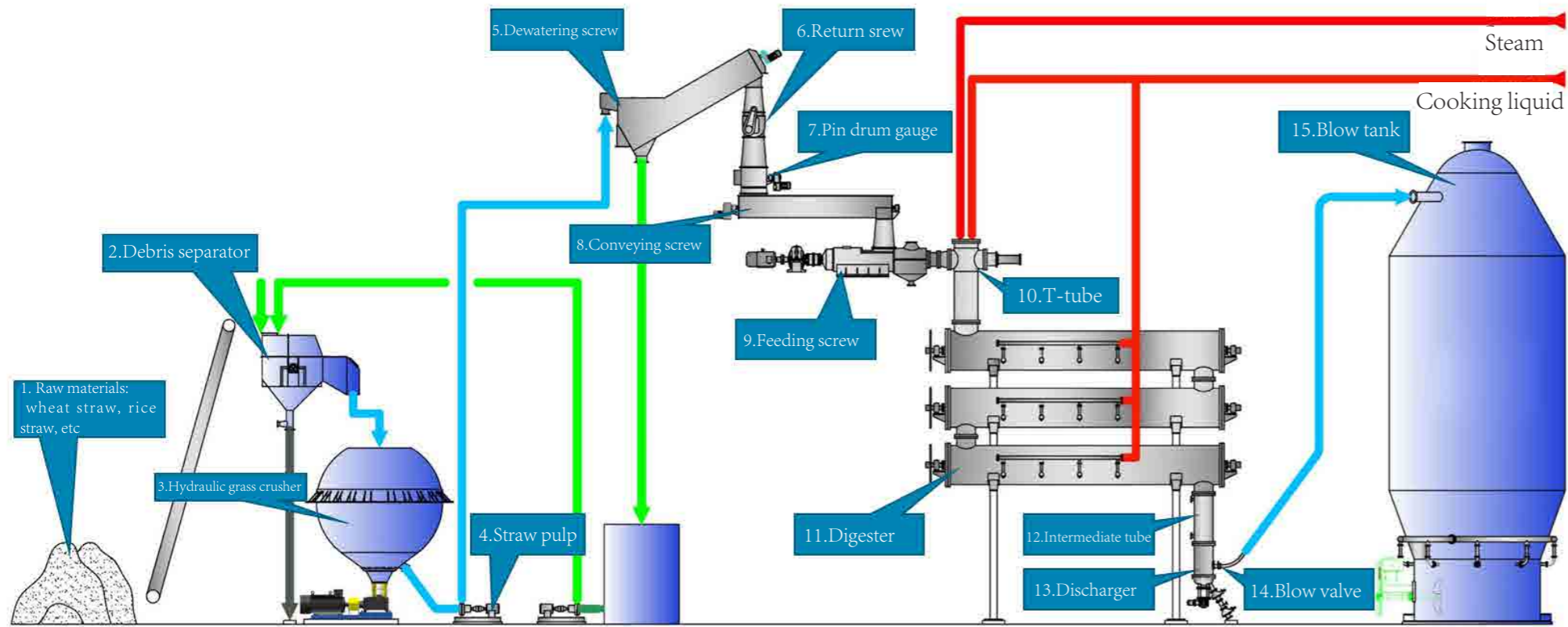
Continuous cooking process includes the entire continuous process from feeding to discharging. It is mainly used for the alkaline pulping, nitrite cooking and prehydrolysis sulfate and sulfite cooking. Now it is developed and used for the pulping of various raw materials, including wood chips and loose permeable non-wood fiber materials, such as bagasse, reed, wheat straw and so on.

## ADVANTAGE

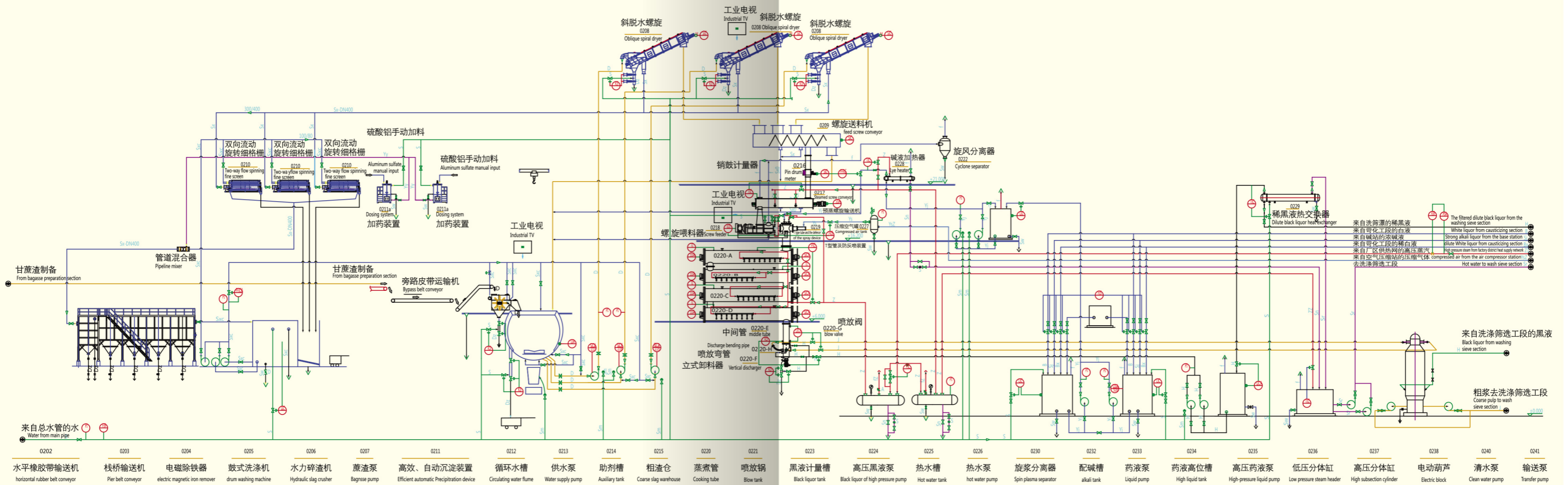
1. Low energy consumption, low steam and electricity consumption, and no peak load.
2. High pulp yield and small area occupied.
3. Low per unit chemical consumption.
4. More cooking uniformity and less slag.
5. High automation and low labor intensity.



## HORIZONTAL TUBE CONTINUOUS COOKING SYSTEM





**CHEMICAL PULP PRODUCTION LINE | CONTINUOUS COOKING SYSTEM****化学浆生产线 | 连续蒸煮系统**







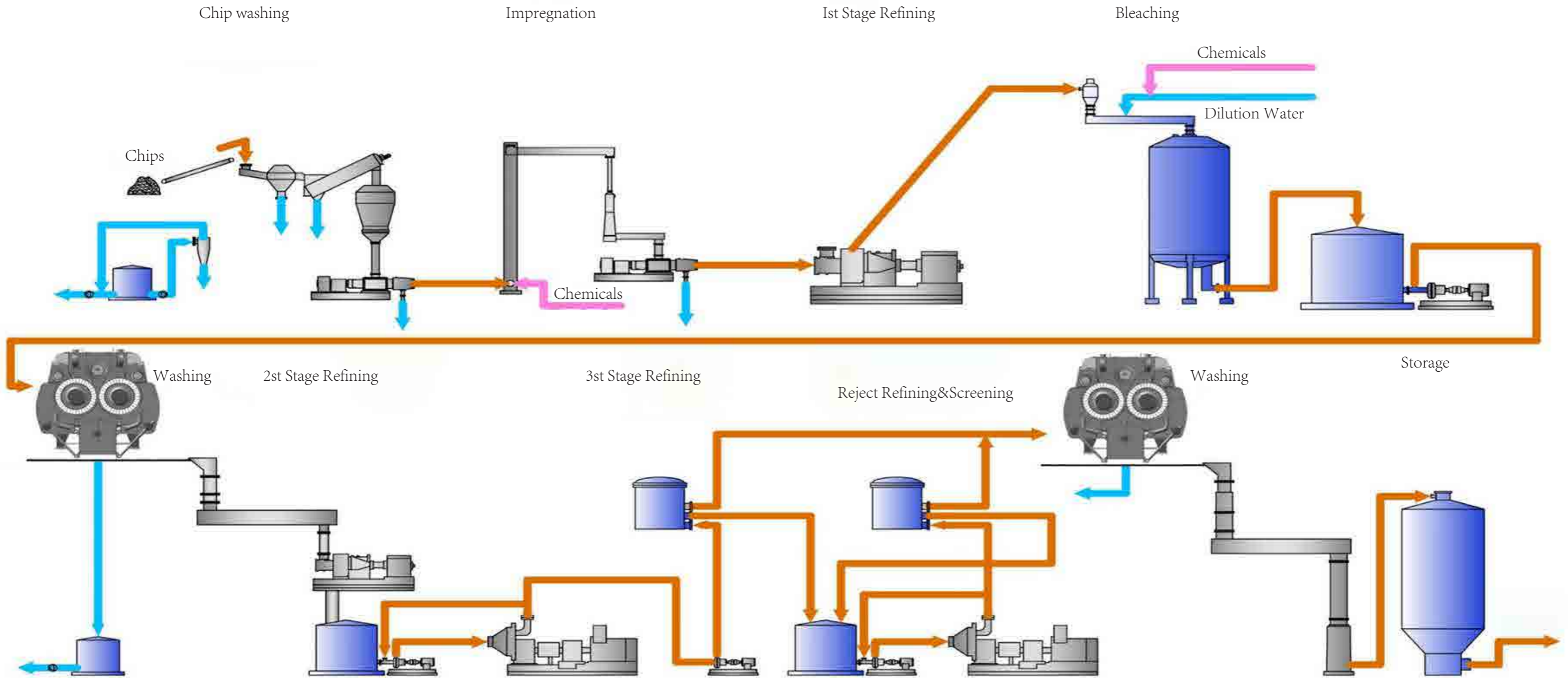


# CHEMICAL PULP PRODUCTION LINE| HORIZONTAL TUBE CONTINUOUS COOKING SYSTEM INSTALLATION ON SITE





# CHEMICAL THERMAL GRINDING MECHANICAL PULP PRODUCTION LINE

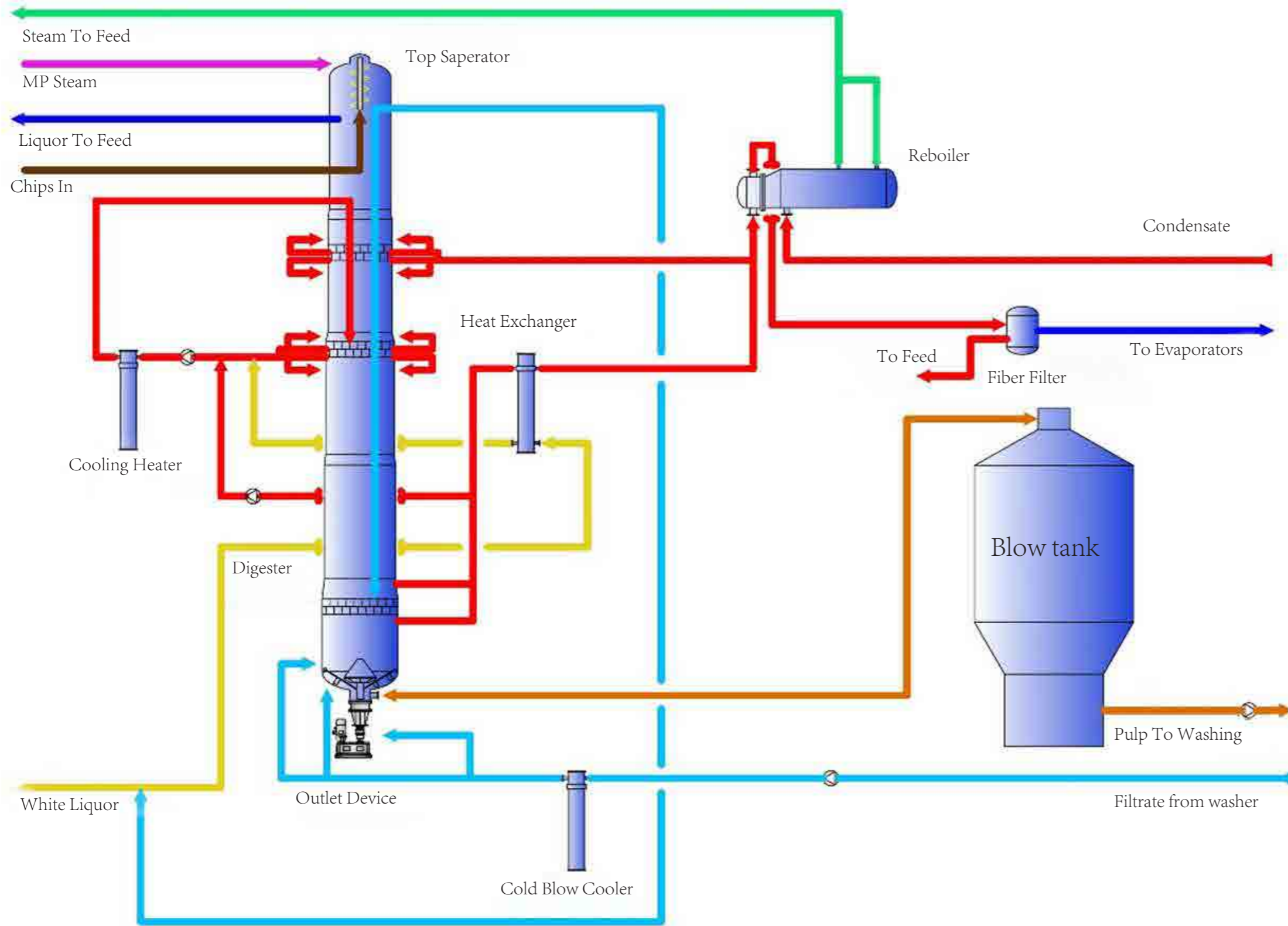


The bleaching chemical thermal mechanical pulp system starts from the washing of wood chips and ends at the pulp storage tower. It consists of the following parts: wood chip washing, steaming, impregnation, high concentration grinding, Washing before bleaching, bleaching, Washing after bleaching, low concentration grinding, screening and pulp residue regrinding ,concentration and storage.





# CHEMICAL THERMAL GRINDING MECHANICAL PULP PRODUCTION LINE



## MAIN EQUIPMENT

- Feed system
- Vertical continuous digester
- Oxygen delignification reaction tower
- Liquid medicine circulation system



## WASHING SYSTEM & BLEACHING SYSTEM | VACUUM WASHER

The ZNK series vacuum washer (group) is a new type of washer with one new type flat valve drum structure. The drum rotates within the tank every one cycle, and the pulp washing machine successively completes the three processes of pulp filtration, washing, and stripping. It is widely used in various pulp extraction and bleaching sections of pulp and paper enterprises.

Diameter series: 1300mm; 2600mm; 3000mm; 3500mm; 4000mm.

Rotor drum width: 1300~9560mm.

Single machine production capacity: Air dried wood pulp  $4\text{-}5\text{t}/\text{m}^2 \cdot \text{d}$ ;

Dried bamboo reed pulp  $3\text{-}4\text{t}/\text{mm}^2 \cdot \text{d}$ .

Air dried wheat straw pulp  $2\text{-}3\text{t}/\text{mm}^2 \cdot \text{d}$ .

Series connection washer Production capacity (extraction of black liquor):

Air dried wood pulp  $3\text{-}4\text{t}/\text{mm}^2 \cdot \text{d}$ .

Dried bamboo reed pulp  $3\text{-}4\text{t}/\text{mm}^2 \cdot \text{d}$ .

Air dried wheat straw pulp  $1\text{-}1.5\text{t}/\text{mm}^2 \cdot \text{d}$ .

Operating parameters: Vacuum degree: 0.01-0.03MPa.

Feed pulp concentration: 1.5% -2.5%.

Pulp out concentration: 8% -12%.

Drum speed: 0.8-3r/min.

### ADVANTAGE

High yield per unit area

Drum body adopts a conical flow runner process to increase flow rate of filtrate.

Flat valve adopts multi-point fixing technology,

Vacuum degree is stable, and feeding concentration is high.

Flat distribution valve occupies less space, with compact structure and easy to maintain.

Corrugated plate can increase effective filtration area and prevent back flow and blockage.

Dispersion type material pressing mixing technology facilitates pulp mixing and washing effect improving. Compound side plate, liquor slice, and split sealing technology.

Stable operation and easy maintenance.

Transmission speed is adjustable and power consumption can be reduced.

## TECHNICAL PARAMETERS

Model/ Specifi- cation	Drum Length (mm)	Drum Rotary Speed (rpm)	Feed Concent- ration (%)	Discharge Concen- tration (%)	Black Liquor Extraction (t/d)			Bleaching Section (t/d)		
					Straw	Bamboo pulp	Wood pulp	Straw	Bamboo pulp	Wood pulp
ZNK35	3200	0.8~3	1.5~2.5	8~12	52~70	70~105	140~210	70~105	87~122	175~245
ZNK40	3650	0.8~3	1.5~2.5	8~12	60~80	80~120	160~240	80~120	100~140	200~280
ZNK45	4100	0.8~3	1.5~2.5	8~12	67~90	90~135	180~270	90~135	112~157	225~315
ZNK50	4550	0.8~3	1.5~2.5	8~12	75~100	100~150	200~300	100~150	125~175	250~350
ZNK55	5000	0.8~3	1.5~2.5	8~12	82~110	110~165	220~330	110~165	137~192	275~385
ZNK60	5450	0.8~3	1.5~2.5	8~12	90~120	120~180	240~360	120~180	150~210	300~420
ZNK65	5200	0.8~3	1.5~2.5	8~12	97~130	130~195	260~390	130~195	162~227	325~455
ZNK70	5600	0.8~3	1.5~2.5	8~12	105~140	140~210	280~420	140~210	175~245	350~490
ZNK75	6000	0.8~3	1.5~2.5	8~12	112~150	150~225	300~450	150~225	187~262	375~525
ZNK80	6400	0.8~3	1.5~2.5	8~12	120~160	160~180	320~480	160~240	200~280	400~560
ZNK85	6800	0.8~3	1.5~2.5	8~12	127~170	170~255	340~510	170~255	212~297	425~595
ZNK90	7200	0.8~3	1.5~2.5	8~12	135~180	180~270	360~540	180~270	225~315	450~630
ZNK95	7600	0.8~3	1.5~2.5	8~12	142~190	190~285	380~570	190~285	237~332	475~665
ZNK100	8000	0.8~3	1.5~2.5	8~12	150~200	200~300	400~600	200~300	250~350	500~700
ZNK105	7450	0.8~3	1.5~2.5	8~12	157~210	210~315	420~630	210~315	262~367	525~735
ZNK110	7800	0.8~3	1.5~2.5	8~12	165~220	220~330	440~660	220~330	275~385	550~770
ZNK115	8150	0.8~3	1.5~2.5	8~12	172~230	230~345	460~690	230~345	287~402	575~805
ZNK120	8500	0.8~3	1.5~2.5	8~12	180~240	240~360	480~720	240~360	300~420	600~840



## ZNK55 SERIES DRUM VACUUM WASHER ASSEMBLING



## ZNK55 SERIES DRUM VACUUM WASHER DRUM PROCESSING



## AMSG SERIES FIVE ROLLER REPLACEMENT PRESS WASHER



The five roller replacement Press washer adopts the principle of conversion press to achieve continuous dehydration and conversion washing of pulp. It can be used for chemical pulp, chemical machine pulp, and dissolved pulp. Electric reducing mechanical transmission, saving investment, reducing maintenance, spiral mechanical pulp distribution, uniform pulp entering the tank, large filtration area, high pulp concentration, side wing structure, and convenient maintenance.

Established products: 900 series five roller pulp press washer, 1500 series five roller pulp press washer.



## WASHING SYSTEM & BLEACHING SYSTEM | SINGLE SCREW PRESS

Single screw press: One squeezing equipment used for pulp dewatering with various process systems, which can effectively handle pulp of various feed concentrations. The concentrated pulp has uniform dryness and stable pulp yield. Diameter series: ASP850, ASP1000, ASP1500.

### ADVANTAGE

Low rotary speed, low power consumption, and less noise

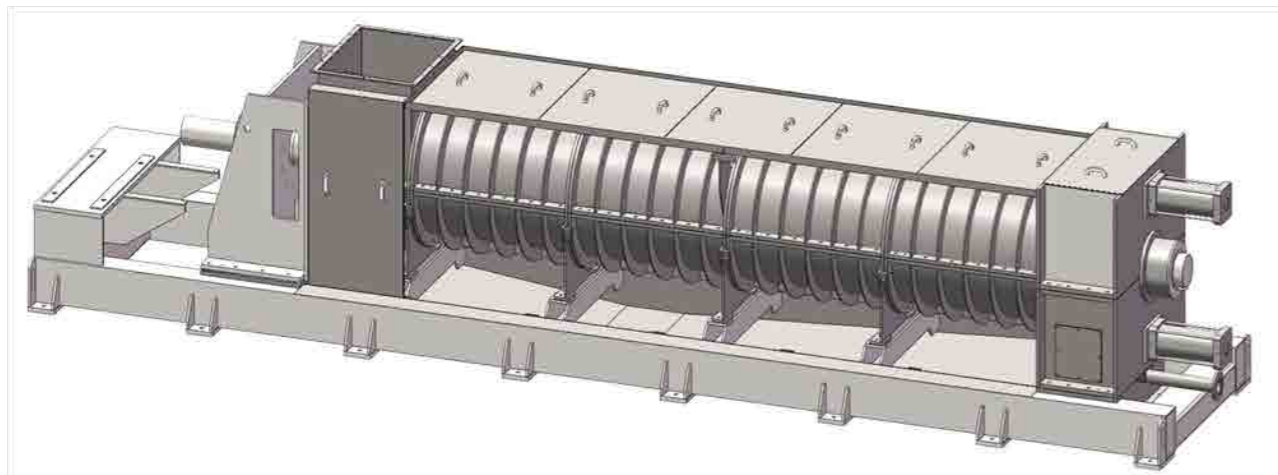
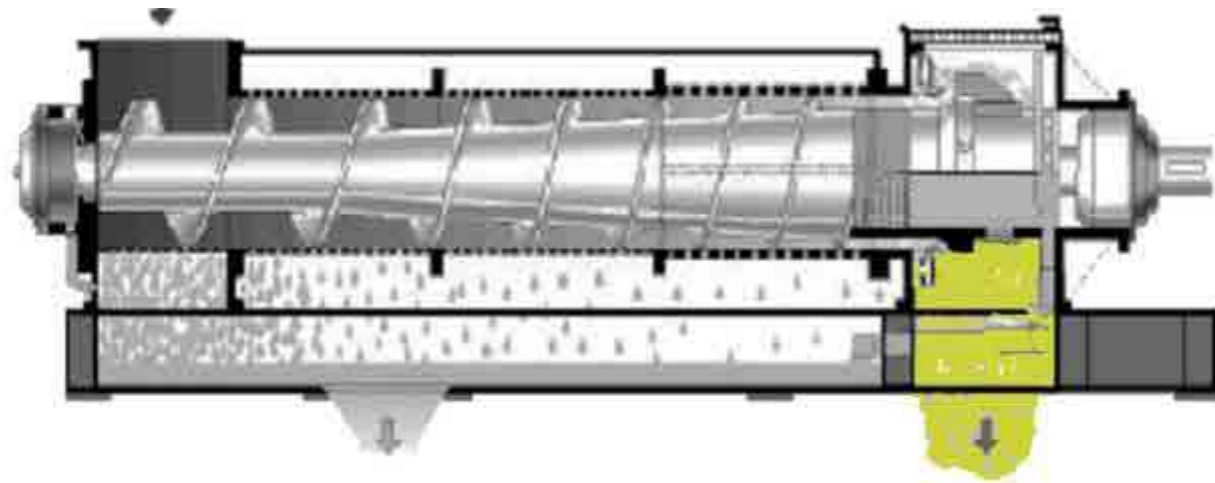
Special structure design prevents pulp from slipping and high outlet pulp concentration.

High dehydration efficiency, 80% of black liquor extracted from pulp, and high pulp dryness.

Applicable range: straw pulp, bamboo pulp, bagasse pulp, wood pulp, etc.

Shell design can prevent odor and black liquor spillover.

Fully mechanical press dehydration and no installation height required.



### TECHNICAL PARAMETERS

Note: based on kraft pulp, wood pulp

Model/ Specification	AMDL - I 600	AMDL - I 750	AMDL - I 1000	AMDL - I 1100	AMDL - I 1200	AMDL - I 1500
Screw Diameter (mm)	600	750	1000	1100	1200	1500
Production Capacity (kt/d)	40~50	50~70	100~120	120~140	140~160	180~200
Power (kw)	37	45	55	75	90	132
Net Weight (kg)	14000	16000	19000	21000	24000	32000
Inlet Concentration (%)	8~12	8~12	8~12	8~12	8~12	8~12
Outlet Concentration (%)	25~35	25~35	25~35	25~35	25~35	25~35

### TECHNICAL PARAMETERS

Note: based on kraft pulp, wood pulp

Model/ Specification	AMDL - II 600	AMDL - II 750	AMDL - II 1000	AMDL - II 1500
Screw Diameter (mm)	600	750	1000	1100
Production Capacity (kt/d)	40~50	50~70	100~120	120~140
Power (kw)	37	45	55	75
Net Weight (kg)	14000	16000	19000	21000
Inlet Concentration (%)	8~12	8~12	8~12	8~12
Outlet Concentration (%)	25~35	25~35	25~35	25~35



## WASHING SYSTEM & BLEACHING SYSTEM | TWIN ROLL PRESS

### TWIN ROLL PRESS INTRODUCTION

This machine is mainly composed of double roller, The center part can be lifted and lowered groove body, motor and hydraulic station, spraying device, fixed scraper device, movable scraper device, end and longitudinal sealing, screw conveyor, machine cover, gearbox, etc. The motor is located on the transmission side, and the other end is the operating side

### TWIN ROLL PRESS WORKING PRINCIPLE

The pulp is pushed between one pair of grooved rollers by the conveying screw. Under the squeezing effect of the feeding pressure and the relative rotation of the grooved rollers, the black liquid in the coarse pulp is squeezed into the grooves on the roller surface and discharged through an axial through-hole connected to the grooves. The concentrated pulp is squeezed out between the two rollers and then scraped into the pulp storage tank by another scraper.

### ADVANTAGE

- Adopt international advanced hydraulic drive system, pulp distribution system and washing system. Be equipped with washing equipment, dehydration equipment and Replacement equipment.
- A fully improved pulp feeding structure for better proportioning, possess independent intellectual property.
- A new sealing and scraping mechanism that seals well during operation and is easy to control.
- Larger filter area, stronger replacement function and better pulp washing effect .
- Advanced hydraulic drive system for more stable and reliable operation.
- High automation for easier Operation.

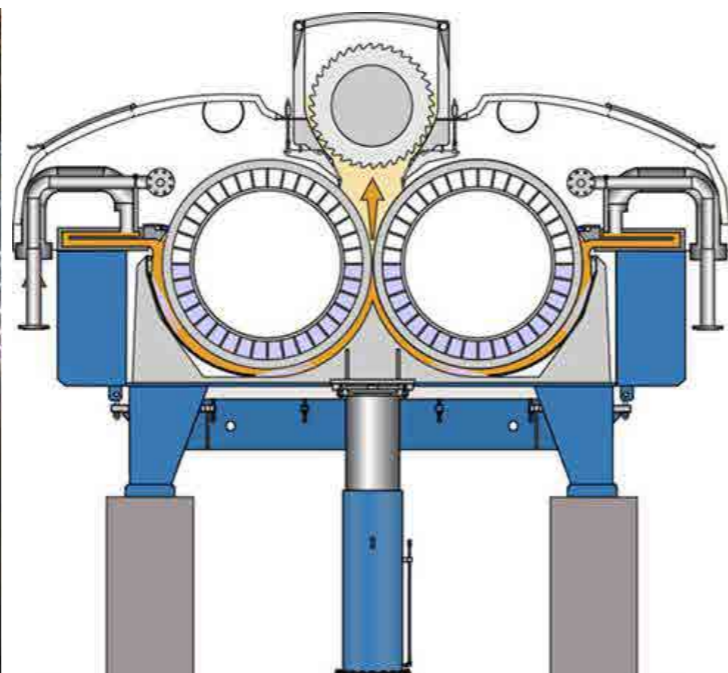


## TECHNICAL PARAMETERS

Model/ Specif- ication	Roll Length (mm)	Roll Diameter (mm)	Roll Speed (rpm)	Inlet Concen- tration (%)	Outlet Concen- tration	Production Capacity		
						Straw/ Bagasse Pulp	Bamboo Pulp	Wood Pulp
SJ712	1200	700	2~20	3.5~10	20~35	30~40	60~80	80'100
SJ915	1500	900	2~15	3.5~10	20~35	40~60	85~120	130~160
SJ920	2000	900	2~15	3.5~10	20~35	55~85	125~160	175~210
SJ928	2820	900	2~15	3.5~10	20~35	80~120	165~220	250~300
SJ935	3500	900	2~15	3.5~10	20~35	110~150	225~280	310~370
SJ940	4000	900	2~15	3.5~10	20~35	120~170	220~310	350~400
SJ945	4500	900	2~15	3.5~10	20~35	160~180	285~350	400~480
SJ1532	3200	1500	2~15	3.5~10	20~35	220~350	450 · 600	700~800
SJ1540	4000	1500	2~15	3.5~10	20~35	400~550	800~1000	1200~1500
SJ1550	5000	1500	2~15	3.5~10	20~35	500~650	1000~1300	1700~1800
SJ1572	7200	1500	2~15	3.5~10	20~35	750~1000	1500~1800	1500~3000



## 945 SERIES DUAL PHASE STEEL FULLY ENCLOSED MICRO POSITIVE PRESSURE OPERATION TWIN ROLL PRESS



## ALKALINE PEROXIDE MECHANICAL PULP (APMP)

Main Characteristics of the APMP pulping process include high whiteness, high yield, low chemical use, less pollution, etc. It is a new high-yield pulping process. Fewer chemicals are used in the bleaching process, and APMP pulp is different from chemical pulp (which produces a large amount of black liquor). so the APMP process is environmentally friendly.

### APMP: MAIN EQUIPMENT OF APMP PRODUCTION LINE:

- A. Screw Conveyor: various specifications and diameters of serial products. Main materials of the equipment include carbon steel and stainless steel according to different processing requirements.
- B. Tearing Machine.
- C. Heat Recovery Equipment: normal pressure scrubber and pressure scrubber
- D. Thickening Equipment.
- E. Container: wood chip bin, latency chest, high concentration bleaching tower, filter, etc.







## ALKALINE PEROXIDE MECHANICAL PULP (APMP)



## THICKENED WATER TREATMENT EQUIPMENT / DISC VACUUM FILTER

As the latest generation of white water recovery and pulp thickening equipment, this product can save energy, reduce water consumption and fiber loss, while protect the environment and prevent pollution. It is mainly suitable for white water recovery in paper mills, and its performance is superior and meets advanced national standards.

### ADVANTAGE

In the white water recovery process, the fiber recovery rate is high, water circulation is achieved, water consumption is reduced, and white water pollution is prevented.

The fan-shaped plate has excellent structure with high strength, easy disassembly, large effective filtration area and good filtration effect.

The equipment products have complete specifications and various diameters, and filtration area can be changed according to different production requirements.

The adjustable distribution valve made of special wear-resistant material has good sealing effect.

The composite sealing tape can provide the maximum sealing effect.

Compact structure, small area occupied and high yield.

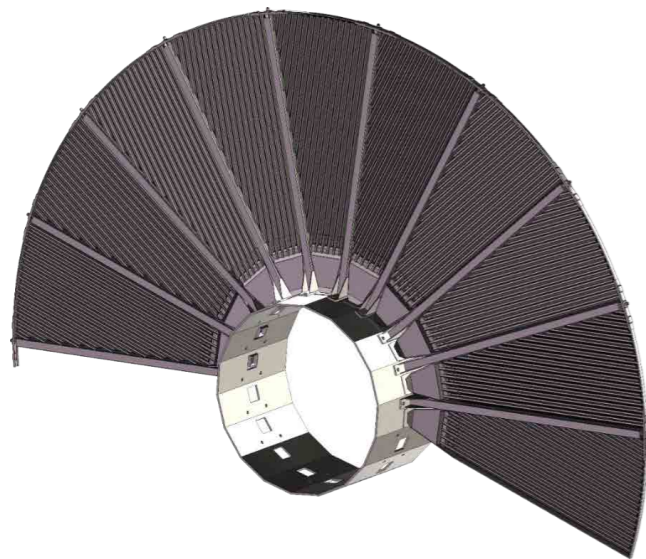
Good economic and social benefits.





## THICKENED WATER TREATMENT EQUIPMENT / DISC VACUUM FILTER

The disc vacuum filter mainly consists of the following parts: tank body, main shaft, filter disc, distribution valve, etc. The tank body can accommodate materials and maintain a stable liquid level. The filter disc function is filter pulp. The distribution valve is connected to the main shaft which purpose is to achieve different functions of each partition during the filtration process.



### DISC VACUUM FILTER TECHNICAL PARAMETERS

Model Item	ZNH25	ZNH35	ZNH45	ZNH55
Disc Diameter (mm)	2500	3500	4500	5500
Disc Filtration Area (m <sup>2</sup> )	8.5	16.7	26	38
Processing Capacity	0.6-3m <sup>3</sup> /m <sup>2</sup> .h(White water recovery) 0.7-1.5t/m <sup>2</sup> .d(Pulp thickened)			
Fiber Recovery Rate (%)	> 95			
Filtration Clarity (mg/L)	20-80			
Inlet Concentration (%)	0.2-0.6 (White water recovery) 0.5-1.2 (Pulp thickened)			
Outlet Concentration (%)	4-6 (White water recovery) 4-15 (Pulp thickened)			
Main Material	The part contracted with the material is made of SS304			
Vacuum Degree (Mpa)	0.02-0.06			
Mesh Washing Water Pressure (Mpa)	0.7			
Stripping Water Pressure (Mpa)	0.7			

Note: Fan shaped plate without filter filtering area about 15% more than the mesh belt type fan shaped plate.





**DISC VACUUM FILTER SERIES AND SPECIFICATIONS**

Disc Quantity	ZNH25	ZNH35	ZNH45	ZNH55
	Total Size Lx Wx H (mm)	Total Size Lx Wx H (mm)	Total Size Lx Wx H (mm)	Total Size Lx Wx H (mm)
4	3885*3035*4168			
6	4485*3035*4168			
8	5085*3035*4168	5397*4100*5664	5907*5450*6615	
10	5685*3035*4168	5997*4100*5664	6507*5450*6615	6700*6400*7235
12	6285*3035*4168	6597*4100*5664	7107*5450*6615	7300*6400*7235
14	6885*3035*4168	7197*4100*5664	7807*5450*6615	7900*6400*7235
16		7797*4100*5664	8307*5450*6615	8500*6400*7235
18		8397*4100*5664	8907*5450*6615	9100*6400*7235
20				9700*6400*7235
22				10300*6400*7235
24				10900*6400*7235

L=Length. W=Width. H=Height



**THICKENED WATER TREATMENT EQUIPMENT /  
GRAVITY DISC THICKENER**

Gravity Disc Thickener is mainly used for low concentration pulp thickening. Unlike traditional disc vacuum filter, it does not require a water leg mounting height. It can replace traditional gravity thickener.

**GRAVITY DISC THICKENER ADVANTAGE**

It is suitable for mechanical wood pulp, waste paper pulp, reed pulp, bamboo pulp, bagasse pulp, wheat straw pulp with high freeness (low beating degree), and the fiber is treated with short fiber or high concentration.

Simple operation, reliable operation, high yield, low energy consumption and easy management.

Filtration material includes stainless steel or polyester fabric.





**GRAVITY DISC THICKENER TECHNICAL PARAMETERS**

Model	ZNP26	ZNP35
Disc Diameter (mm)	2600	3500
Single Disc Filtration Area (m <sup>2</sup> )	7.5	15
Production Capacity	0.8-3t/m <sup>2</sup> .d	
Inlet Concentration (%)	0.3-2	0.3-2
Outlet Concentration (%)	3-5	3-5
Mesh Washing Water Pressure (Mpa)	0.6-0.7	

Disc Quantity	ZNH26	ZNH35
	Total Size Lx Wx H (mm)	Total Size Lx Wx H (mm)
6	3718*4035*3230	
7	3998*4035*3230	
8	4278*4035*3230	4705*5090*4383
9	4558*4035*3230	5005*5090*4383
10	4838*4035*3230	5305*5090*4383
11	5118*4035*3230	5605*5090*4383
12	5398*4035*3230	5905*5090*4383
13	5678*4035*3230	6205*5090*4383
14	5958*4035*3230	6505*5090*4383
15	6238*4035*3230	6852*5090*4383
16	6518*4035*3230	7152*5090*4383
17	6798*4035*3230	7452*5090*4383
18	7078*4035*3230	7752*5090*4383
19		8052*5090*4383
20		8352*5090*4383

**THICKENED WATER TREATMENT EQUIPMENT /  
FRAME SHAFT DISC FILTER**

Frame shaft disc filter is a new structural serialized product for fiber recovery and filler from white water or pulp thickening. It belongs to continuous rotary filtration equipment.

**FRAME SHAFT DISC FILTER ADVANTAGE**

Frame shaft disc filter belongs to continuous rotary filter equipment. The fan-shaped plate has a wider filtrate passage with small flow resistance allowing higher filtration flow rate.

Filtration mesh is a plug-in structure (polyester mesh or no filtration mesh), which is easy to replace.

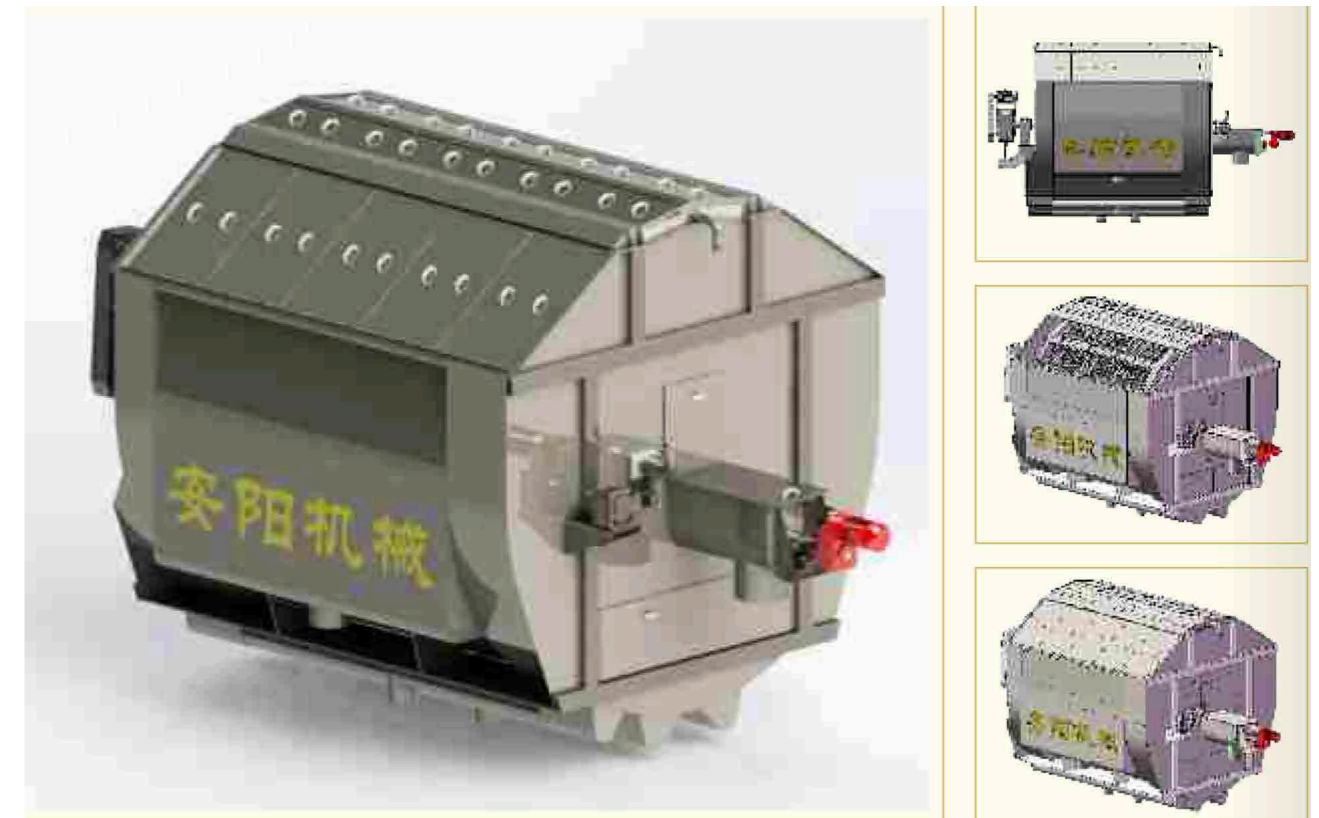
Frame shaft type rotor arm has a stirring function to prevent the pulp from agglomerating in the tank, thus it allows a higher inlet concentration (0.5-3%) and a built-in large discharge open.

Screw will never lead to the pulp piling phenomenon.

Liquor level difference between the inside and outside of the fan-shaped plate is used as the reliable operation, and easy installation

Small area occupied, low energy consumption, high yield and high safety

Large-scale production can be met for modern paper enterprises.





### FRAME SHAFT DISC FILTER TECHNICAL PARAMETERS

Project	Unit	White Water Recovery	Pulp Thickening
Disc Diameter	mm	3500	
Filtration Area	m <sup>2</sup>	16 (mesh);18 (Corrugated without mesh)	
Fan-shaped Plate Quantity	plate/disc	12	
Processing Capacity	--	3~4 m <sup>3</sup> /h•m <sup>2</sup>	0.5~4 t/d•m <sup>2</sup>
Fiber Recovery Rate	%	≥95	≤350
Turbid Filtrate Clarity	mg/L	≤300	≤150
Clear Filtrate Clarity	mg/L	≤60	--
Super-clear Filtrate Clarity	mg/L	≤40	0.5~3
Inlet Concentration	%		5~12
Outlet Concentration	%	4~6	
Mesh Washing Frequency	Mpa	0.7~0.9	
Mesh Washing Frequency	time/min	8.8	
Mesh Washing Nozzle Quantity	piece/disc	4	
Mesh Washing Motor Power	KW	1.1	
Stripping Water Pressure	Mpa	0.7~0.9	
Stripping Nozzle Quantity	piece/disc	2	
Main Motor Power	KW	Select according to equipment specification	
Discharge Method		Built-in Screw	

### WATER TREATMENT EQUIPMENT /SPIN FILTER

Spin filter can recover the fine fibers produced in the papermaking process, the air-floatation water from air floatation machine, cooking black liquor, white water under the mesh, backwater from disc filter, whitewater from the vacuum suction box through the filtration and achieve the purpose of reuse.

#### SPIN FILTER ADVANTAGE

It does not require power consumption and is an energy-saving product.

Hydraulic automatic rotary filtration mesh doesn't need power supply and external force to drive.

Fully-automatic continuous filtration, without manual operation

Simple operation, compact structure, and small area occupied.

Automatically remove impurities and maintain the function of filtration mesh for a long time.

Fine fibers and useful substances in white water can be recovered.

Filtration mesh has a self-cleaning function and optional batch spray cleaning Low maintenance cost

Various specifications of filters are available: 60m<sup>3</sup>/h, 80m<sup>3</sup> /h, 100m<sup>3</sup> /h, 150m<sup>3</sup>/h, 200m<sup>3</sup> /h, 250m<sup>3</sup>/h, 325m<sup>3</sup> /h and 400m<sup>3</sup>/h.





# CHEMICAL EQUIPMENT



AM owns Grade A2 Pressure Vessel Design and Processing Qualification, such as reactor, storage tank, heat exchanger, etc.





DESIGNED AND PROCESSED ACCORDING TO CUSTOMER REQUIREMENTS AND IN ACCORDANCE WITH THE STANDARDS OF AMERICAN SOCIETY OF MECHANICAL ENGINEERS (ASME).



Maximum Height: 100m

Maximum Diameter: 20m

For segmented transport, maximum diameter and height of overall transport are 4.5m and 100m respectively. Maximum exchange area of single heat exchanger: 500m<sup>2</sup>

Proficient in special material welding processes such as composite panels, 316L duplex stainless steel, titanium and aluminum welding etc.

Obtained Grade A2 (pressure vessel) design and manufacture certification, with ASME U steel stamp



## GENERAL PAPERMAKING EQUIPMENT/ JB SERIES MIXED

### JB SERIES MIXED USE AND FUNCTION

1. It is mainly used for circulation mixing of pulp chest to keep the pulp in suspension and ensure that paper components are evenly distributed in the pulp.
2. Its blade design is advanced, the thrust is strong, and the angle can be adjusted according to different pulp concentrations.

### JB SERIES MIXED UMAIN TECHNICAL PARAMETERS

Model	JB500	JB600	JB700	JB750	JB850	JB1000	JB1150	JB1250	JB1350	JB1500	JB1800
Blade Diameter(mm)	Φ500	Φ600	Φ700	Φ750	Φ850	Φ1000	Φ1150	Φ1250	Φ1350	Φ1500	Φ1800
Pulp Concentration(%)	≤5										
Pulp Chest Volume (m3)	20-50	30-60	35-70	40-75	50-85	70-110	80-120	90-140	100-150	120-180	150-230
Motor Power (Kw)	5.5/7.5	5.5/7.5/11	7.5/11/15	7.5/11/15	11/15/18.5	15/18.5/22/30	18.5/22/30	22/30/37	30/37/45	37/45/55	45/55/75

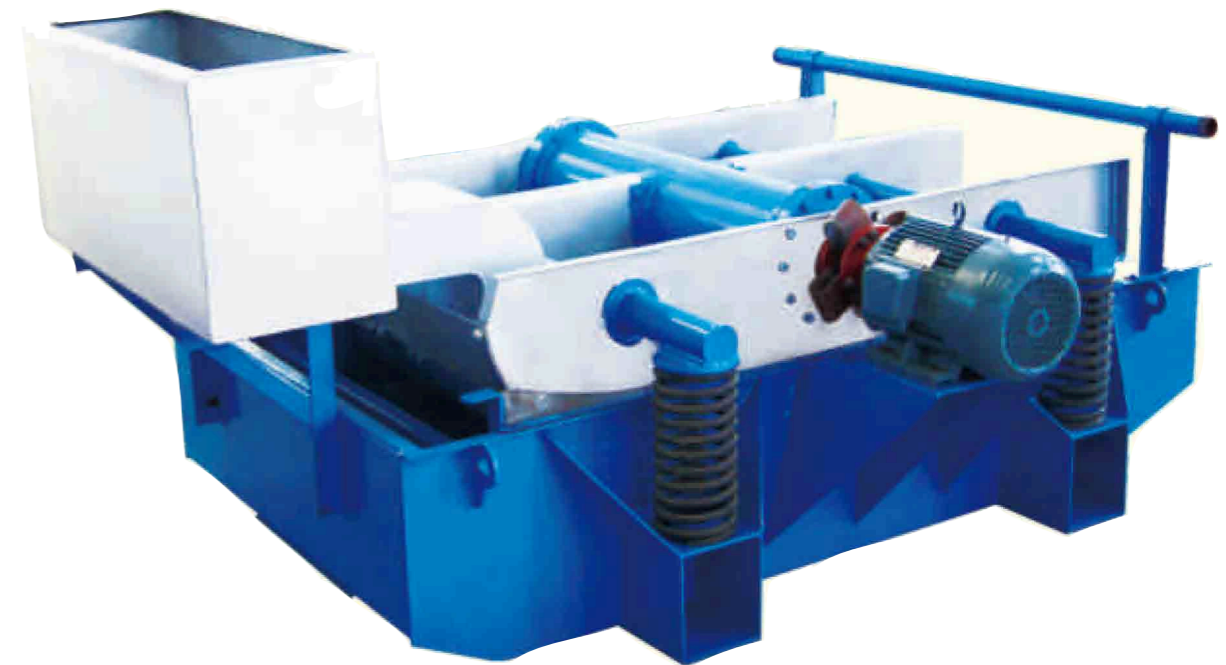


## ZSK SERIES FRAME VIBRATING SCREEN

1. It is mainly used to screen out various impurities in the pulp suspension.
2. Specially designed air sealing chamber provides screen plate with strong self-cleaning function.
3. Screening effect is good, the operation is stable, the noise is less, and the maintenance is simple.

### ZSK SERIES FRAME VIBRATING SCREEN MAIN TECHNICAL PARAMETERS

Model		ZSK1	ZSK2	ZSK3
(m2)Screening Area		1	2	3
Production Capacity	(t/d) Mesh Screen	7.5-25	12-50	25-75
	(t/d) Slot Screen	3.5-7.5	7-15	11-25
Inlet Concentration	(%) Mesh Screen		1.0-1.5	
	(%) Slot Screen		0.5-0.8	
Kw Motor Power		2.2	3	4





## WIND POWER EQUIPMENT



According to general plan of National Energy Administration's Notice on National Wind Power Development and Construction Plan for 2016 (Guoneng Xinneng [2016] No. 84), in 2016, the total development and construction scale of national wind power was 30.83 million kW, and new increased installed capacity of wind power of Henan Province ranked the first in China, According to the estimates, in the past three years, the installed capacity of wind power will reach 1,178MW in Anyang and surrounding areas. And the project investment will be nearly 10billion Yuan, The output value of wind power equipment manufacture is about 1 billion Yuan. In April of 2016, CNBM(AM) successfully won the bid for the 100MW wind tower production project of wind power farm of Jinfeng Group (the installed capacity is the largest currently, single tower with the height of 100m and total weight of 240tons), filling the gap of wind power equipment manufacture of CNBM and Anyang.

AM will focus on the target of building "Anyang Wind Power Equipment Manufacture Base" exert the advantages of raw material and equipment manufacture of Anyang, integrate the industrial chain, form the community through close relation with the enterprises such as Anyang Iron & Steel Group Co., Ltd. Anyang Longteng Heat Treatment Material Co., Ltd. etc. and undertake wind power equipment manufacture business of Henan Province jointly, reaching effective cooperation and mutual benefits and striving to achieve "Henan Equipment, Equipment Henan".





## TRADE

Raw Material Processing Equipment

Wood Chipper, Dust Collector, etc.

Papermaking Machine

Toilet Paper Making Machine, etc.

Packaging Machinery, Paper Product Processing Equipment

Paper Products, Pulp Boards, etc.



WHAT CAN WE  
DO FOR YOU?



Phone: +86-372-2160985

Fax : +86-372-2160985

Web: www.ayjxpm.com

Email: info@ayjxpm.com

Add: NO.158 Changjiang Road, Anyang,  
Henan, China



## OUR SERVICE

Self-realization, and Pursue the Best

Service Philosophy

Using Quality Efficiency to Win Customer Trust

Efficiency Comes from Management, Management

Focuses on Innovation

### PRE-SALES DESIGN

The specifications and models of the equipment are determined according to customer's actual needs. At the same time, the equipment can also be customized according to customer's special requirements. The production line design process can be provided and we will design a reasonable production line that truly satisfies the customer. We will provide the customer with technical personnel training, so that the customer party can master sufficient technology knowledge and mechanical maintenance skills. All of the above services are free.

### SALES TRACKING

In the sales process, the production process is tracked to ensure product quality and meanwhile shorten production period. We will pay attention to product acceptance. In addition, our senior technicians are sent free to help the customer design and develop construction plan and we will strive to ensure that the plan is reasonable and the cost is the lowest.

### AFTER-SALES SERVICE

We will send professional personnel in charge of customer service to guide the on-site installation till it succeeds. We are responsible for training the operators till the customer party can master the operations fully and carry out the production.